



India No.1 Brand



# SUN PROTECTION

☎ 73500 92095 | 93700 74252 | 🌐 [www.moustop.com](http://www.moustop.com)



India No.1 Brand





## Comfort for every season

'Creating healthy spaces', the Moustop baseline, is more relevant today than it has ever been — in fact, the global health crisis has added a whole new dimension to Moustop mission. What we need now is natural solutions. What we need now is maximal daylight without overheating, and natural fresh air without compromise. In other words: what we need now is to bring the outside in and to bring the inside out.

Whether that's through ventilation, sun protection or outdoor living: the art lies in striking the perfect balance between the artificial aspect of technology and a sense of going back to nature, allowing you to breathe just as easily inside as you can outside. Living in harmony with yourself is partially about being able to live outside in the same level of comfort as you would expect inside, regardless of whether you're in a private home, in a penthouse or in a flat. Read on to see for yourself what a difference sun protection can make.

**!** Did you know that a combination of outdoor sun protection and night cooling can keep the indoor temperature under control throughout the year? All without having to resort to an energy-guzzling air conditioner!

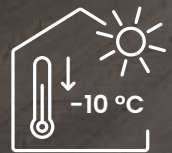


India No.1 Brand

## Why sun protection?

Outdoor sun protection blocks the sunrays before they reach the glass, meaning the inside temperature always stays under control. In warmer periods, sun protection keeps temperatures down inside, without having to resort to an energy-guzzling air conditioner. But that's not all: sun protection also prevents annoying reflections on screens and monitors, and stops furniture discolouration. All of this is achieved while your view to the outside remains unimpeded, and your privacy is guaranteed. Building standards keep getting stricter. Homes built today are so well insulated that in summer, once the heat gets in, getting it back out can prove a real challenge. And with that in mind, prevention is surely better than cure.

**!** Did you know that dynamic sun protection can help you lower your cooling costs by more than 36%?



**REGULATE HEAT FROM THE SUN AND PREVENT OVERHEATING**

Did you know that in India, outdoor sun protection can cool down homes by up to 10 °C?





## The benefits of outdoor sun protection



### THERMAL COMFORT

Outdoor sun protection enables you to control the amount of sunlight coming in, which in turn enables you to control the temperature inside. From optimal absorption of solar heat in winter to preventing your home from overheating in summer: with a connected system, everything is controlled fully automatically. That way, you get to enjoy a comfortable indoor climate all year round while minimising your heating or cooling expenses, without having to lift a finger. The smart, sustainable and comfortable choice.



### VISUAL COMFORT

If you're someone who wants to let in as much daylight as possible through their windows, we've got some good news for you: natural light keeps flooding into your home even when our screens are down. At the same time, your view of the outside is never interrupted. That way, you never get the sense you're living in a sealed box, but you still get to keep the sunrays away from the glass. At the same time, sun protection eliminates glare on screens and stops people outside from looking in. A genuine win-win situation, in other words.



### DURABILITY

Our outdoor sun protection is durable, in terms of its production, in terms of its lifespan, and in terms of its functionality. Our products are tested to ensure they keep working properly in the long term. On top of that, by making optimal use of your screens, you can save on heating bills in winter, and on energy-guzzling air conditioning in summer. Alternatively, how about a solar cell to get even more out of the sun by running your system on renewable energy?



## Outdoor sun protection type

	DYNAMIC OUTDOOR SUN PROTECTION				
	Windproof screens	Outdoor blinds	Roller shutters	Articulated arm awnings	Projection screens
<b>Thermal comfort</b> (insulation)	✓	✓	✓ ✓	✗	✗
<b>Thermal resistance</b> (overheating - indoor climate)	✓ ✓	✓ ✓	✓ ✓	✗	✓
<b>Visual comfort</b> (daylight management, glare)	✓ ✓	✓ ✓	✗	✓	✓
<b>Contact with the outdoors</b>	✓	✓	✗	✓ ✓	✓ ✓
<b>Possible dimensions</b>	✓ ✓	✓	✓	✓ ✓	✓
<b>Preferred sun protection position</b> façade orientation	ESW	ESW	ESWN	ESW	ESW
<b>Wind load</b>	✓ ✓	✓	✓ ✓	✓	✗
<b>Typical solar factor*</b> (with Type C glazing)	0.09	0	0.05	0.17	0.12
<b>Typical light transmittance factor**</b>	0.05	0.05	0.02	✗	✗

Classification	
✓ ✓	very good
✓	good
✗	not relevant

# Which outdoor sun protection is right for you?



## FABRIC SUN PROTECTIONS (P. 17)

Looking for subtly integrated outdoor sun protection? If so, fabric sun protection are the best choice for you. The head boxes and side guiding channels can be neatly integrated into the façade these days, leaving them barely visible.



## STRUCTURAL SUN PROTECTION (P. 46)

Just like blades and sliding panels in front of your windows, aluminium canopies above your windows simply add that extra something to a building. They can also be used to emphasise certain lines, shapes and other eye-catchers.





India No.1 Brand

# FABRIC SUN PROTECTION

The sun is a natural source of heat, and when we get plenty of sunlight, we simply feel better in ourselves. Unfortunately, however, excessive bright or low sunlight can cause discomfort — and that's when action needs to be taken. With transparent fabric sun protection on the outside of the windows of your home, you get to enjoy the benefits of the sun all year round, without compromising your view of the outside.





## Benefits of fabric sun protection

We all require natural daylight. The combination of dynamic outdoor sun protection and clear glass enables you to enjoy the maximum amount of natural daylight through the windows, from the inside.



### THE VIEW OUTSIDE IS RETAINED AND YOUR PRIVACY IS PROTECTED

With the screens closed, you can still see outside, while daylight continues to flood in. And that's where screens differ from roller shutters, which keep out all the light. That's unless you opt for blackout screens, of course, which are the perfect solution for the bedroom, for example.



### EXTREMELY WIND RESISTANT

With its ingenious zip system — our technology — the fabric sits fully windproof in the side guiding channels, whatever position it is in. What's more, in the closed position, the screen is insect-proof too.



### THE ULTIMATE AESTHETIC SOLUTION

Small fabric head boxes with narrow side guiding channels and a wide range of colours: that's what makes screens the ultimate aesthetic choice for your home. This is especially true if you ensure they are completely incorporated into the building envelope.



Summer



Winter

### ENJOY EVERY SEASON

The dynamic character of screens enables you to bring the best of the outside in during every season, unlike solar protection glazing, which blocks the sunrays all year round. Screens keep out the heat but let in as much daylight as possible in summer, and help you gain as much heat from the sun as possible in winter, meaning you're always in control.



Renson fabric sun protection is windproof up to 130 km/h thanks to our **technology**. The windproof inner rail also comes with a patented, co-extruded wear-resistant layer: our **Smooth technology**. This guarantees smooth, durable and silent guiding of the fabric.



India No.1 Brand

! **Did you know** that thanks to our moustop motorized screens technology and its sleek, minimalist design, motorized screens Minimal can be perfectly integrated on the inside too? When incorporated into the design of your building as early as possible, motorized screens Minimal is the perfect solution for blocking out as much light as possible in your bedroom.

SUN PROTECTION FABRIC



SUN PROTECTION FABRIC

## STEP 1: SELECT YOUR APPLICATION

### SURFACE-MOUNTED

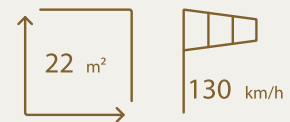
#### INSTALLATION METHOD 1



Subtly installed in front of existing windows or doors with fully finished head box. Extremely suitable for retrofit installation or minor renovations, without any impact on the building envelope. The fabric colour and screen coating can easily be selected to fit your windows and existing architectural style.

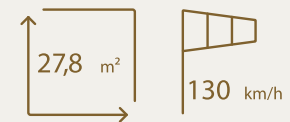
#### MOUSTOP MOTORIZED SCREENS

- Standard range
- Renowned technologies



#### MOUSTOP MOTORIZED SCREENS MINIMAL

- Minimum impact on architecture
- Minimum head box size
- Minimum side guiding channel with view width of just 20 mm
- Silent motor available for indoor use





## SURFACE-MOUNTED USING SOLAR POWER

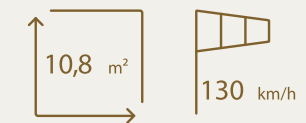


### SUN PROTECTION WITHOUT BREAKING

Our Solar screens are windproof surface-mounted screens powered by solar energy. A solar cell mounted on the front of the head box powers the autonomous controls of the screen, meaning no separate electrical wiring is required. As a result, this windproof screen can easily be mounted on your window without having to carry out any breaking to install electrical wiring. On top of that, you get to enjoy a seven-year warranty on our solar kit (motor, solar cell, and battery). All in all, the perfect solution for renovation projects!

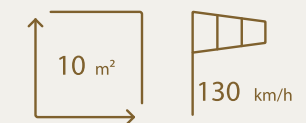
### MOUSTOP MOTORIZED SCREENS SOLAR

- Standard range
- Renowned technologies



### MOUSTOP MOTORIZED SCREENS MINIMAL SOLAR

- Minimum impact on architecture
- Minimum head box size
- Minimum side guiding channel with view width of just 20 mm



**! Did you know** that Moustop Motorized Screens Solar can now also be ordered with a separate solar cell, including a battery for façade installation? This enables you to install the solar cell in a different place on the façade where it can capture more sunlight





**Did you know** that you can spread the investment in screens over time, without compromising on the allure of your home? With Moustop, you can opt to install all the required infrastructure for recessed screens now, before selecting a fabric set insert at a later time that suits you. Want to find out more?



## RECESSED INSTALLATION METHOD 7



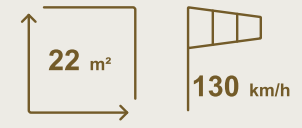
### BUILDING A NEW HOME OR REPLACING YOUR WINDOWS?

If so, your screens can be recessed in front of the window frame completely invisibly. You can easily adjust the fabric colour and coating of the head box and guiding channel to match your windows. Even the bottom bar disappears seamlessly into the head box. In short, you get maximal natural daylight and a view of the outside, with minimal impact on the allure of your façade.

The fabric can come down close to the window or further away, whichever you prefer. That way, you can always combine it with a fly screen or sliding window with external handles, for example.

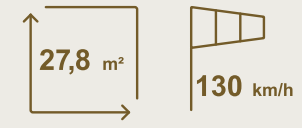
### MOUSTOP MOTORIZED SCREENS

- Standard range
- Renowned technologies
- Can be combined with corner solutions



### MOUSTOP MOTORIZED SCREENS MINIMAL

- High-end design
- Minimum head box depth for aesthetic integration into the facade
- Unique solutions for minimalist windows, including a completely freestanding coupling side guiding channel for wide windows up to 12 m.



**Did you know** that the windproofness or water tightness of your façade remains guaranteed at all times? Thanks to its unique, three-part recessed guiding channel, the screen head box remains accessible at all times, without breaking or any risk of damage!



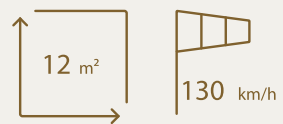
## RECESSED

COMBINED WITH VENTILATION/ACOUSTICS  
(INSTALLATION METHOD 4)

This recessed screen is installed on the window, and the head box remains accessible from the inside. Depending on your preference, this screen can serve as a purely acoustic solution, or as a combination of sun protection and natural window ventilation. This type of screen is ideal as a replacement for dated, built-in roller shutters, for example.

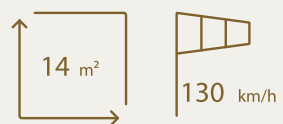
### MOUSTOP

provides sun protection as well as ventilation with the windows closed. It is draft-free thanks to a self-regulating valve that responds to pressure differences. Equipped with an integrated blackout fabric, this is also a perfect solution for bedrooms.



### MOUSTOP

130 km/h Thanks to the integrated acoustic foam, is perfect for façades subjected to excessive noise levels. Given the fact that its head box dimensions are identical, it can be combined perfectly with Fixvent





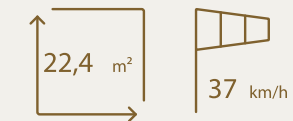
## CORNER SOLUTIONS

### SCREENS FOR GLASS-ON-GLASS CORNER WINDOWS

What could be worse than having to look at unsightly aluminium side guiding channels on your glass-on-glass corner or sliding windows that need fabric sun protection? Or even the cable guiding system on the corners of the glass? Fortunately, there's Moustop and Moustop Max: two solutions that ensure you don't have to compromise on your panoramic view.

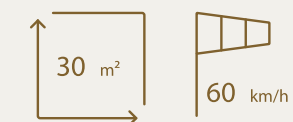
#### MOUSTOP

The Moustop with a smaller head box size has detached corner fabrics.



#### MOUSTOP MAX

With Moustop Max, the two fabrics on the corner also zip into one another when lowering. This creates a fully secured corner and even greater wind resistance. Given its highly technical nature, maintenance must be performed on this screen every year..



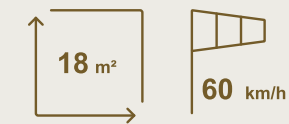
**! Did you know** that Moustop Max is the only windproof sun protection fabric for glass-on-glass corner windows, and is the perfect match for the large glass sections and minimalist design so typical of contemporary architecture



## FREESTANDING APPLICATIONS

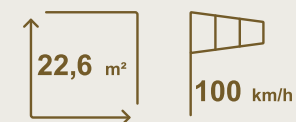
### MOUSTOP SCREEN FREESTANDING

Screens can also easily be fitted to outbuildings, patio covers and pool houses. To preserve as much as possible of your garden view, Moustop Screens can be fitted with a transparent crystal window.



### MOUSTOP SCREEN MINIMAL FREESTANDING

Thanks to its ingenious design, Moustop screen Minimal offers extremely high wind resistance as a freestanding application. This, combined with finishing of the highest quality, makes this range the freestanding screen of choice!



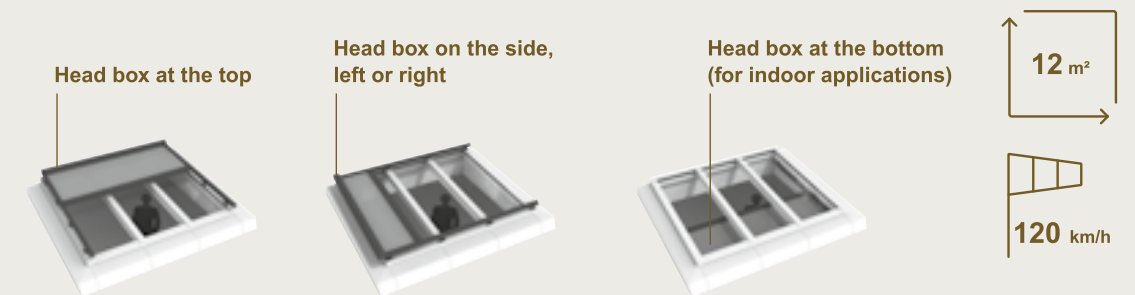


## SUN PROTECTION FOR CONSERVATORIES

Conservatories or skylights draw in a lot of daylight, but with that comes a lot of solar heat. Horizontal screens are the ideal outdoor sun protection solution for this challenge. They block the sunrays before they reach the glass and prevent the temperature from rising too high inside.

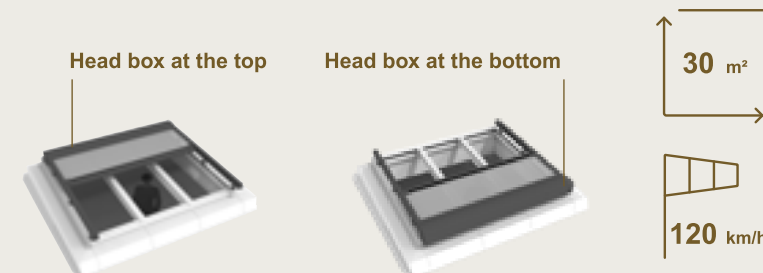
### MOUSTOP TOPFIX

Topfix is a horizontal fabric sun protection with a revolutionary tensioning method. Combined with Moustop screen technology, this ensures the fabric stays perfectly taut at all times, even without supporting rollers. Good to know: the fabric head box can be installed at the top, bottom, or even on the side.



### MOUSTOP TOPFIX MAX

Topfix Max is the larger version of Topfix and can be used to cover widths of 6 m in one piece, and 30 m<sup>2</sup> in total. With Topfix Max, the fabric head box can be fitted at the top or at the bottom, depending on your preference.



### MOUSTOP TOPFIX VMS

a specific sun protection system for Moustop Modular Skylights. can be fitted both above the fixed and movable modules of Moustop Modular Skylights

**!** Did you know that Moustop Topfix Max can also be used as a freestanding sun protection solution on the top of an existing structure?



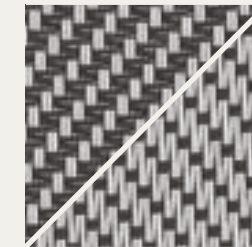


## STEP 3: SELECT YOUR FABRIC AND COLOUR

### FABRIC

Once you've decided to go for fabric sun protection, there are different types of fabric to choose from: from translucent to 100% blackout, fibre glass or polyester. Each has its own specific characteristics, colour options, and applications.

Sergé



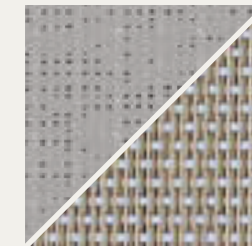
### FIBRE GLASS FABRIC

Fibre glass fabric is the most suitable fabric to block sunrays, while still allowing the light to pass through at the same time. This screen fabric is made of PVC coated fibre glass threads and is dimensionally stable, insensitive to humidity and heat, rot-free, and colourfast.

Different types of fibre glass fabrics are available:

- Sergé, for the optimal balance between sun protection and outside view.
- Natté, with a perpendicular weave and different look
- Privacy, which offers more protection from outsiders looking in

Soltis

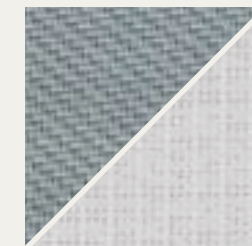


### POLYESTER FABRIC

This type of fabric consists out of a fine mesh cloth with a fire-resistant PVC coating (fire rating M1). This results in an extremely stable fabric that will deform very little under stress. As such, polyester is ideal for horizontal sun protection fabric systems with tensioned fabric such as the Topfix (Max). For Fixscreen, we also offer Veozip, which combined thermal comfort with a natural look and feel, partly due to the use of hemp fibre

Veozip

Satiné 21154



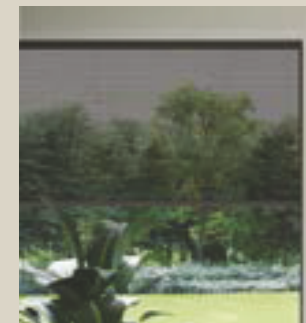
### BLACKOUT FABRICS

This type of fabric consists out of a fine mesh cloth with a fire-resistant PVC coating (fire rating M1). This results in an extremely stable fabric that will deform very little under stress. As such, polyester is ideal for horizontal sun protection fabric systems with tensioned fabric such as the Moustop (Max). For Moustop screen, we also offer Veozip, which combined thermal comfort with a natural look and feel, partly due to the use of hemp fibre

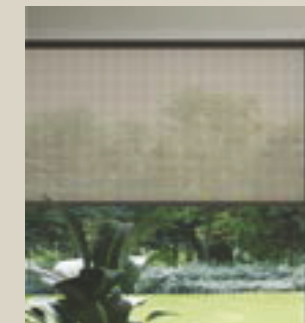
Soltis B92



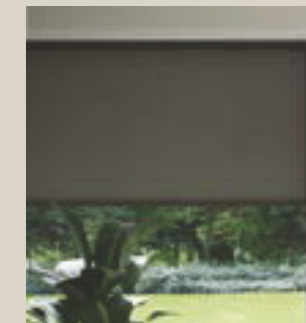
### TIPS FOR CHOOSING YOUR SUN PROTECTION FABRIC



Tip 1: A dark fabric provides the best possible view to the outside.



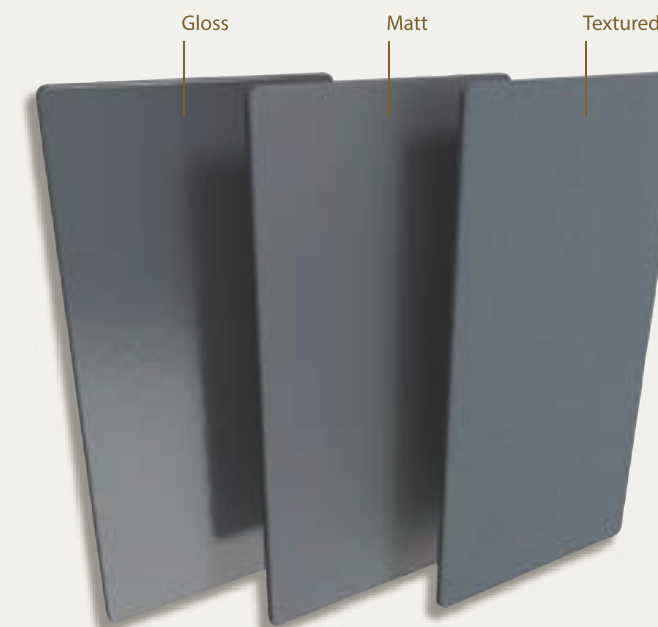
Tip 2: A lighter fabric allows more daylight to enter, reducing the need for artificial lighting.



Tip 3: A 100% blackout fabric is the best choice for bedrooms.

### COATING COLOUR

For the aluminium elements, a wide choice of RAL colours is available. That way, you can rest assured that the aluminium parts always integrate seamlessly with the style of your building. The choice is yours: a glossy or matte finish, or a trendy textured coating that is not only wear and scratch-resistant, but also easy to maintain.



# STRUCTURAL SUN PROTECTION

Prefer to have an eye-catcher instead of invisibly integrated screens for optimal sun protection? You can, with our **structural sun protection** solutions. Horizontal structural sun protection offers the necessary shade from intense sunlight during the summer, while allowing you to continue to soak up the warmth from the low sun in winter — all without having to compromise on your view of the outside. If you're looking for even greater flexibility, take a look at our different types of **sliding panels**. You can slide them in front of or away from the windows as you wish to allow in or block exactly as much sun as you wish.



# FIND THE RIGHT STRUCTURAL SUN PROTECTION FOR YOU

---

- STEP 1: SELECT YOUR APPLICATION  
LOGGIA PANELS  
SUNCLIPS CANOPY
- STEP 2: SELECT YOUR COLOUR





## Benefits of structural sun protection



### ARCHITECTURAL

Structural sun protection lends your façade more character. The choice between different looks and installation methods guarantees a perfect match with your architecture.



### VIEWS OUTSIDE ARE RETAINED

With a canopy above your window, you always retain a perfect view to the outside while also getting the necessary shade. That way, the high summer sun no longer gets free rein, meaning you can prevent temperatures from rising too high inside. In turn, sliding panels with moveable blades contribute to privacy in the house.



Summer



Winter

### NATURAL LIGHT TO SUIT YOU

By adjusting the position of your structural sun protection, you are in charge of how much sunlight — and heat — comes in through your windows. That way, it never gets too hot inside.



Loggia®

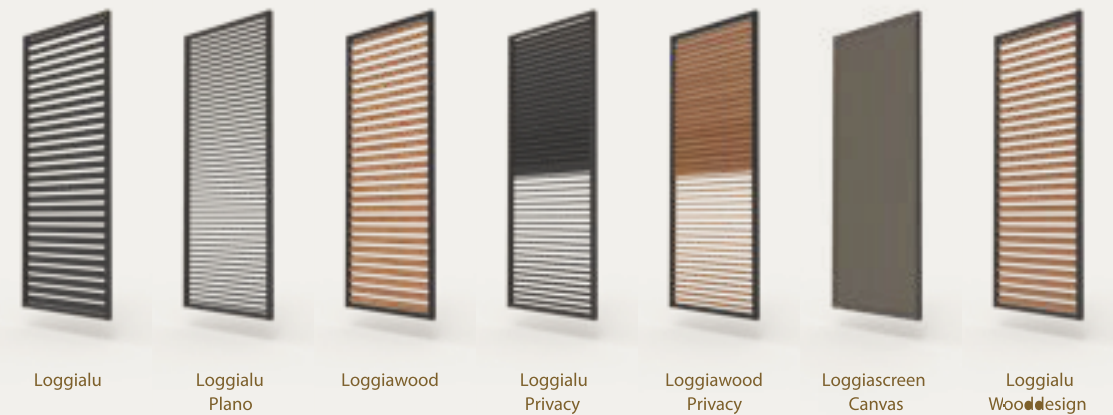
## STEP 1: SELECT YOUR APPLICATION

### LOGGIA , DECIDE OF HOW MUCH LIGHT AND SUN YOU WANT IN YOUR HOME

Loggia panels are made of aluminium frames, supplemented with (optional) screens, and aluminium or wooden blades. The panels can either be fixed in place, fitted to slide in front of the window

#### PRIVACY

The aluminium or wooden blades are also available in a tilting Privacy version, which can be opened or closed depending on how much light, sunshine, or privacy you want.



Loggialu

Loggialu  
Plano

Loggiawood

Loggialu  
Privacy

Loggiawood  
Privacy

Loggiascreen  
Canvas

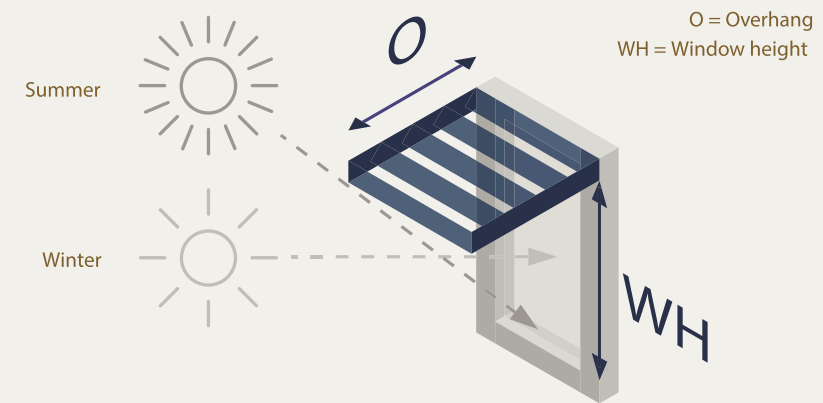
Loggialu  
Wooddesign



## SUNCLIPS, BLADES ON HORIZONTAL MULLIONS

Sunclips canopies above the window form the ideal buffer against the intense summer sun, without restricting your view outside. When the winter months come, you still get to enjoy the free heat provided by the low sun.

For optimal results, it is important that the overhang is correctly tailored according to the orientation of the façade and the height of the window.



Orientation of the façade	E	SE	S	SW	W
Recommended overhang O	1.2 x WH	0.8 x WH	0.5 x WH	0.8 x WH	1.2 x WH



## STEP 2: SELECT YOUR COLOUR

For the aluminium elements, a wide choice of RAL colours is available. That way, you can rest assured that the aluminium parts always integrate seamlessly with the style of your building. The choice is yours: a glossy or matte finish, or a trendy textured coating that is not only wear and scratch-resistant, but also easy to maintain.



# GENERAL





# Why choose Moustop ?



## MINIMALIST DESIGN

Premium design and innovative technology are combined in products that add architectural value. Maximal integration of elements and components contributes to the sleek, minimalist allure of our solutions.



## ENDLESS CUSTOMISATION OPTIONS

Using the online screen selector to choose between the endless possibilities, you and our Ambassador can design a solution to suit you in no time. A solution that offers the functionality you need, in the style you prefer, whether rustic or contemporary, and whether for your home or workplace.



## MINIMUM MAINTENANCE, MAXIMAL ENJOYMENT

During the development of our products, ease of use and maintenance always comes first, whether that's through remote controls via an intuitive app or easy cleaning. Your guarantee for decades of enjoyment with minimum maintenance!



## DURABLE INNOVATION

Advanced engineering contributes to healthy and comfortable living, inside and outside. Our attention to every last detail serves as your guarantee of a long lifespan and a healthy indoor climate thanks to durable, energy efficient solutions, from choice of material to production, logistics and everyday use.



## Warranty

At Moustop, we exclusively use high-quality materials. That way, you get to enjoy an extensive warranty on all parts, meaning you rest assured about the durability of your sun protection.

**5**  
YEARS  
GENERAL  
WARRANTY

**7**  
YEARS  
FIXSCREEN  
WARRANTY

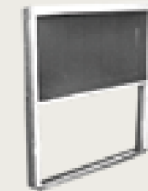
**10**  
YEARS  
COATING  
WARRANTY

## Testing

Tests monitored by an independent test laboratory have established that Moustop screen is capable of withstanding extremely high wind speeds, meaning Moustop can offer a guarantee of up to 130 km/h (in closed position). This corresponds to a force 12 hurricane on the Beaufort scale.



Non-windproof fabric  
sun protection



Moustop Screen  
at 130 km/h



# Frequently asked questions

## Why should I choose fabric sun protection over roller shutters?

Vertical fabric sun protection can be used on extremely large windows — up to as large as 27.8m<sup>2</sup> — or for sliding windows, corner windows or curtain walls. Roller shutters can only be used for surfaces with smaller dimensions. On top of that, roller shutters only fit standard windows, and the and the head boxes are much larger in terms of dimensions.

Screens prevents your home from overheating, without your having to sit in the dark. What's more, you always retain your view of the outside!

The look and feel of screens can also be perfectly adapted to your home. An extensive range of fabrics and colours is available.

## What are the best options available for outdoor or indoor sun protection?

As soon as the sunrays reach the glass in your window, they will start heating up the glass, and the rest of your house too. As such, it is important to prevent sunrays from reaching the window — and the best way to achieve that is with outdoor sun protection. Though more expensive when compared to indoor sun protection, outdoor sun protection is much more efficient and will reduce your energy bills. By the way: if your home is well-insulated and airtight, once the heat gets in, it won't be able to find a way out, meaning temperatures will soon rise to unbearably high levels.

## Can I save on my energy bills with sun protection?

Absolutely, and you can maximise your savings by automating your sun protection. Our unique Renson Connect Solmate system automatically controls your sun protection based on your personal preferences and local weather parameters such as the temperature and the sunlight coming in. For example, your sun protection will automatically be lowered when the sun is shining bright. This prevents the interior of your home from overheating, eliminating the need for extra cooling. At the same time, you still get to enjoy the warmth from the sun in winter, heating your home free of charge and reducing the amount of energy you use.

## I am hesitating between using air conditioning and outdoor sun protection – which of these is the better choice?

Cooling is gradually taking over from heating as the biggest future challenge we face, particularly when it comes to preventing your home from overheating. The best way to do so is by preventing heat from entering your home. With that in mind, a combination of outdoor sun protection and intensive night cooling is an environmentally and energy-conscious alternative.

## Can sun protection also prevent annoying reflections on my television and computer screen?

Absolutely, though the choice of fabric is very important in helping to meet to your wishes and needs. As such, it is important that you think carefully in advance about whether you want to prevent overheating, avoid reflections, maintain a clear view of the garden, or whether you want to guarantee your privacy. Depending on your needs, both indoor and outdoor Renson sun protection applications can offer solace using the right fabric.

## Can I use my fabric sun protection when it rains?

If the fabric gets wet during an unexpected shower, you can roll it up, before lowering it again in better weather to let it dry. Even so, to prevent the formation of mould and stains, make sure you never keep the fabric rolled up for more than three days. For fabrics with crystal windows along their full width, we recommend that you only roll them up when fully dry.

## Can I use my fabric sun protection when it is freezing, snowing or raining heavily?

In strong winds, your screen can be operated as normal. Renson offers a high wind guarantee up to 130 km/h. Even so, it can be difficult to establish exactly how hard the wind is blowing. Wit that in mind, you can also choose to automate your sun protection using a wind sensor. In freezing weather, it's best not to operate your sun protection fabric. Leave them in place and do not roll them up or down until temperatures rise above freezing.

## Can I also use fabric sun protection to darken a room — a bedroom, for example?

When equipped with blackout fabric, sun protection fabric is perfectly suited for use in bedrooms. You can even do so at a later stage, as with our Connect&Go technology, fabrics can easily be replaced. What's more, Fixscreen Minimal also offers the option of a silent indoor motor on top of its minimalist design, making it the perfect solution for darkening a bedroom as an indoor application.

## Will the sun change the colour of my fabric?

We only use fabrics of the best quality. All our fabrics are guaranteed to last, as evidenced by the five-year warranty we offer. If your fabrics do start to discolour after a long period of time, you can simply contact your Renson® Ambassador to replace them.

## How do I make sure my fabric sun protection lasts a long time?

Thanks to our many years of experience, we guarantee durable products that you can enjoy for a long time. Nevertheless, regular maintenance is important to extend the lifespan of our products. Even so, that maintenance is limited to cleaning the fabric and the profiles.

## Can my sun protection fabric be customised?

Yes, your Ambassador will help you in your search for the perfect product for your project. They will conduct measurements and will order all your sun protection elements according to your specific requirements.

## Are your products CE certified?

Yes, our products are tested and approved according to the standards that are common in the industry. Renson ®goes much further and also carries out additional tests in order to offer the best guarantees.



### OFFICE ADDRESS

Sr.No. 281/1,2/2B, Sathe Wasti, Lohagaon-Dhanori Rd,  
Pune, India, 411047

Call: 7350092095 & 9370074252

[www.moustop.com](http://www.moustop.com)

• Scan & Reach At Our Online Platforms •

